

Platinum Series 3G

Objects of Desire

2022



Objects of Desire

Platinum Series 3G is a culmination of ground-breaking acoustic innovations brought together in a number of expertly crafted designs that celebrate the rich legacy of the Platinum Series.

The definition of elegance

Platinum Series has always represented Monitor Audio's engineering and design prowess and the 3rd generation is no exception. Our UK-based design team worked closely with our acoustic engineers to deliver an aesthetic that celebrates the high-performance components without overpowering its surroundings.

All-new cabinet design

The cabinet design on Platinum Series 3G is all new. Beautifully detailed and expertly crafted, our industry-leading attention to detail and passion for quality ensures that each cabinet is elegant and refined on the eyes, while being engineered for total acoustic performance.

A technical legacy with 'Concept 50' technology

Platinum Series 3G builds on two generations of loudspeaker design, which has consistently evolved at each step. We have introduced a ground-up new MPD III transducer, developed for the 'Concept 50' speaker, which improves on every aspect, as well as improvements to the mid and bass driver cones called RDT III – a further significant development in driver technology.





Platinum 100 3G

Model	Platinum 100 3G
System Format	2-way
Frequency response (-6dB) Free-Field	37 Hz – >60 kHz
Frequency response (-6dB) In room	28 Hz – >60 kHz
Sensitivity (2.83v @ 1m)	85 dB
Nominal impedance	4 Ohms
Minimum Impedance	4.0 Ohms @ 180 Hz
Continuous Power Handling (RMS into 4 Ohms, Pink Noise with 6dB Crest Factor)	150 W
Recommended Amplifier Power(RMS into 4 Ohm, Music Signal)	75-300 W
Bass Alignment	HiVe II port system
Crossover Frequency	LF/HF: 2.85 kHz
Port Tuning Frequency	44 Hz
Drive Unit Complement	1 x 6" RDT III bass driver, 1 x MPD III tweeter
External Dimensions including Grille and Terminals (H x W x D)	398 x 225 x 325 mm 15.6 x 8.8 x 12.7"
External Dimensions including Outrigger Feet and Spikes (H x W x D)	N/A
Weight (Each)	15.2 kg 33 lb 8 oz

Acoustic Technologies:

RDT III mid-bass driver cone
MPD III Tweeter
Multi-layered cabinet construction & cabinet bracing
Single bolt-through driver bracing
Aluminium driver frames
HiVe II Port Technology



Platinum 200 3G

Model	Platinum 200 3G
System Format	3-way
Frequency response (-6dB) Free-Field	32 Hz – >60 kHz
Frequency response (-6dB) In room	23 Hz – >60 kHz
Sensitivity (2.83v @ 1m)	88 dB
Nominal impedance	4 Ohms
Minimum Impedance	4.0 Ohms @ 150 Hz
Continuous Power Handling (RMS into 4 Ohms, Pink Noise with 6dB Crest Factor)	300 W
Power(RMS into 4 Ohm, Music Signal)	150-600 W
Bass Alignment	HiVe II port system
Crossover Frequency	LF/MF: 825 HzMF/HF: 3 kHz
Port Tuning Frequency	38 Hz
Drive Unit Complement	2 x 6" RDT III bass driver, 1 x 4" RDT III mid-range driver, 1 x MPD III tweeter
External Dimensions including Grille and Terminals (H x W x D)	1023.2 (1031.4)* x 368 x 454 mm 40.2 (40.6)* x 14.4 x 17.8"
External Dimensions including Outrigger Feet and Spikes (H x W x D)	1039.7 (1047.9)* x 368 x 454 mm 40.9 (41.2)* x 14.4 x 17.8"
Weight (Each)	35.8 kg 78 lb 14 oz

Acoustic Technologies:

RDT III mid-bass driver cone
MPD III Tweeter
ARC (anti-resonance Composite) used on mid-range enclosures
TLE (Tapered Line Enclosure) parabolic-shaped enclosure cast from ARC material
Multi-layered cabinet construction & cabinet bracing
Single bolt-through driver bracing
Aluminium driver frames
HiVe II Port Technology
Precision engineered outrigger foot assembly



Platinum 300 3G

Model	Platinum 300 3G
System Format	3-way
Frequency response (-6dB) Free-Field	25 Hz – >60 kHz
Frequency response (-6dB) In room	17 Hz – >60 kHz
Sensitivity (2.83v @ 1m)	88 dB
Nominal impedance	4 Ohms
Minimum Impedance	4.0 Ohms @ 3.75 kHz
Continuous Power Handling (RMS into 4 Ohms, Pink Noise with 6dB Crest Factor)	400 W
Recommended Amplifier Power(RMS into 4 Ohm, Music Signal)	200-800 W
Bass Alignment	Dual HiVe II port system
Crossover Frequency	LF/MF: 650 HzMF/HF: 3 kHz
Port Tuning Frequency	32 Hz
Drive Unit Complement	2 x 8" RDT III bass driver, 1 x 4" RDT III mid-range driver, 1 x MPD III tweeter
External Dimensions including Grille and Terminals (H x W x D)	1112.7 (1120.9)* x 430 x 525 mm 43.8 (44.1)* x 16.9 x 20.6"
External Dimensions including Outrigger Feet and Spikes (H x W x D)	1129.2 (1137.4)* x 430 x 525 mm 44.4 (44.7)* x 16.9 x 20.6"
Weight (Each)	53.6 kg 118 lb 2 oz

Key features:

The Platinum 300 3G is the flagship of the Platinum Series. A 3-way floorstander, it represents the absolute pinnacle of what is achievable at its price-point in terms of both performance and materials.

Acoustic Technologies:

- RDT III mid-bass driver cone
- MPD III Tweeter
- ARC (anti-resonance Composite) used on mid-range enclosures
- TLE (Tapered Line Enclosure) parabolic-shaped enclosure cast from ARC material
- Multi-layered cabinet construction & cabinet bracing
- Single bolt-through driver bracing
- Aluminium driver frames
- HiVe II Port Technology
- Precision engineered outrigger foot assembly



Platinum C250 3G

Model	Platinum C250 3G
System Format	3-way
Frequency response (-6dB) Free-Field	48 Hz – >60 kHz
Frequency response (-6dB) In room	30 Hz – >60 kHz
Sensitivity (2.83v @ 1m)	88 dB
Nominal impedance	4 Ohms
Minimum Impedance	4.0 Ohms @ 150 Hz
Continuous Power Handling (RMS into 4 Ohms, Pink Noise with 6dB Crest Factor)	300 W
Recommended Amplifier Music Signal)	150-600 W
Bass Alignment	Sealed
Crossover Frequency	LF/MF: 850 HzMF/HF: 3.5 kHz
Port Tuning Frequency	N/A
Drive Unit Complement	2 x 6" RDT III bass driver, 1 x 2.5" RDT III mid-range driver, 1 x MPD III tweeter
External Dimensions including Grille and Terminals (H x W x D)	225 x 630 x 326 mm 8.8 x 24.8 x 12.8"
External Dimensions including Outrigger Feet and Spikes (H x W x D)	N/A
Weight (Each)	25.4 kg 55 lb 15 oz

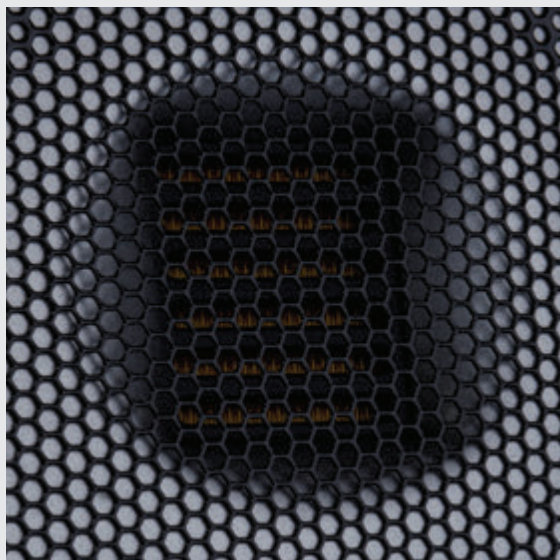
Key features:

The Platinum C250 3G is a compact, sealed-box 3-way centre channel speaker

Acoustic Technologies:

- RDT III mid-bass driver cone
- MPD III Tweeter
- Aluminium Mid-range enclosure developed from Cinergy
- Multi-layered cabinet construction & cabinet bracing
- Single bolt-through driver bracing
- Aluminium driver frames





Pinpoint accuracy for lifelike sound

New MPD III high frequency transducer

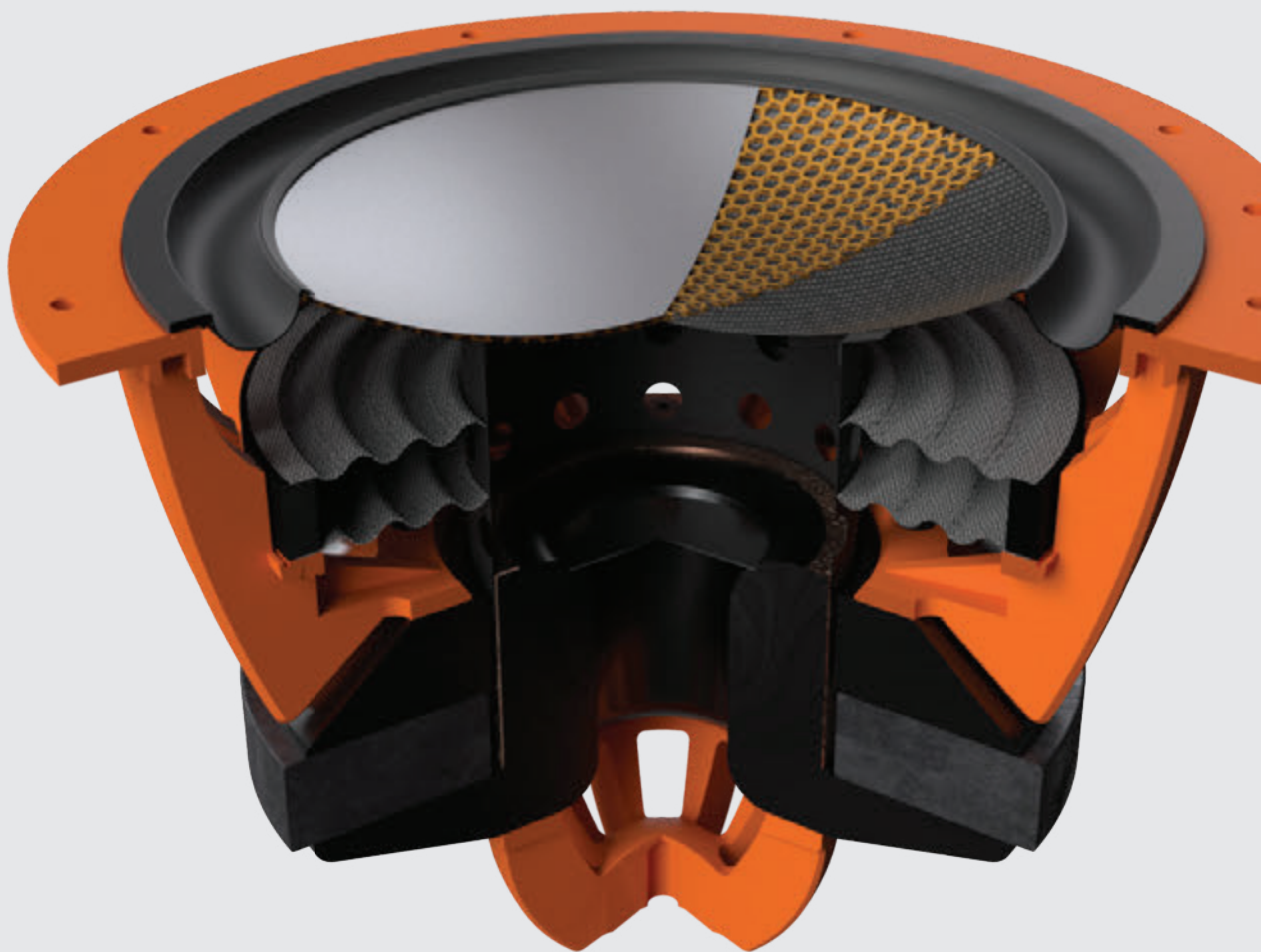
The improvements help to reduce distortion and flatten the frequency response leading to a clear and consistent sound across all your music.

- Developed for our ground-breaking Hyphn loudspeaker
- Micro Plicated Diaphragm (MPD) extends tweeter passband to >60 kHz (compared to >40 kHz for a typical AMT)
- Square radiating area ensures equal directivity in horizontal and vertical planes, resulting in an improved soundstage
- Optimised rear volume to ensure minimal ripple in audible frequency range, with gentle rise on-axis to deliver exceptional detail
- Optimised waveguide to give controlled directivity and radiation impedance matching, further improving soundstage and maximising sensitivity

Precision perfect

New Rigid Diaphragm Technology III (RDT II)

- The Rigid Diaphragm Technology III (RDT III) cone has three new optimisations over its predecessor
- New rear layer featuring two uniform layers of carbon fibre skin to reduce cone breakup
- Optimised cone edge treatment to extend passband of drivers
- Optimised rubber surround to reduce cone breakup
- Combined the above improvements significantly increase the useable bandwidth enabling improvements to the crossover and final response of the speaker. This is especially important for the Platinum







JOHANNESBURG

14 Commerce Crescent
Kramerville Sandton,
2090
Tel: +2711 781 8887
Email: info@homemation.co.za

CAPE TOWN

Unit 10B,
The Waverley Business Park
Kotzee Road
Mowbray
Tel: +2711 781 8887
Email: info@homemation.co.za

hm
homemation 
INNOVATING YOUR LIFESTYLE
www.homemation.co.za
www.monitoraudio.com